

SWINDON TOWN

FOOTBALL CLUB

official programme



1/-



Complete Comprehensive Coverage



At home or away

The Evening Advertiser
has it covered

M^cILROYS

*the Department Store
with that something extra* **Service!**

Free

DELIVERIES
ESTIMATES ON CARPETS & CURTAINS
CARPET FITTING

WILLIAM McILROY (Swindon) LTD.

Tel. 5294



SWINDON TOWN FOOTBALL COMPANY LIMITED

Registered Office: COUNTY GROUND, SWINDON

President: Mr. W. J. CASTLE

Vice-President: Mr. J. DAVIES

Directors:

Chairman: Mr. H. E. LANE

Vice-Chairman: Mr. R. FRICKER

Messrs. F. L. COLLINGS, A. W. DONE, M. EARLE, C. J. GREEN, F. PLYER,
H. WILLIAMS, K. H. WILMER and Dr. J. NICHOLAS

General Manager: Mr. R. A. MORSE

Team Manager: Mr. F. FORD

SATURDAY, 14th MARCH, 1970

Division II

SWINDON TOWN v PRESTON N E

Kick-off 3 p.m.

SWINDON TOWN	PRESTON N.E.	OFFICIALS
1 Downsborough	1 Kelly	REFEREE:
2 Thomas	2 Patrick	Mr. D. Pugh
3 Trollope	3 Heppolette	(Chester)
4 Butler	4 Spark	
5 Burrows	5 Cranston	
6 Harland	6 Hawkins	
7 Smith	7 Clarke	
8 Smart	8 Spavin	
9 Jones	9 Tinsley	LINESMEN:
10 Noble	10 Gemmill	Red Flag:
11 Rogers	11 Lee	Mr. L. J. Davies
12 Horsfield	12	(Llanelli)
Colours: Red and White	Colours: Blue and White	Yellow Flag: H. Goodfellow (Birmingham)

G. A. Streetly

Tobacconist and Confectioner

10 BOURNE ROAD
MOREDON SWINDON
Telephone 4956

C. Goodenough and Sons

Removal and Storage Contractors
any distance

25 Cricklade Street Swindon
Telephone 4555 and 3855

CECIL GREEN

Artistic Decorations in all its branches

12 Armstrong Street
Swindon Wilts
Telephone 4593

W. J. SELWOOD

Telephone Swindon 5884

Saddlery

General Leather Goods Manufactured and
Repaired to Your Individual Requirements

103 BROAD STREET
SWINDON WILTSHIRE

Notton's Cafe

COUNTY ROAD

200 yards from Ground

Perfect meals at all times

For High Class
Central Heating, Plumbing
Painting and Decorating
Electrical Installations
and Repairs

NORTH WILTS Sanitary and Heating Co. Ltd.

NEWPORT STREET SWINDON
Telephone 5373/4



THE ALCOHOL FUEL

COATE GARAGE

REPAIRS - OVERHAULS - WELDING
SERVICING - REBORING - TYRES

Props. E. V. & W. H. Mattick
Marlborough Road Swindon

Leese, Ing & Co. Ltd.

Mineral Water and
Squash Manufacturers

LANSDOWN ROAD SWINDON

Telephone 22744

Maylott Studios

For Group and Sports Photographs

Official Photographer to
Swindon Town Football Club

31 Faringdon Road

Telephone 22792

Always at your service

L. Bibby

For all Types — Rags, Iron and Metal, etc.
Spot Cash Paid. Please Telephone 2101
and our van will call.

THE PADDOCK ERMIN STREET
STRATTON ST. MARGARET

news & views

This afternoon we welcome one of the greatest names in the football world — “Proud Preston”, “the Old Invincibles” and the “Lily Whites”. They were one of the original members of the League formed in 1888, and the first Champions. In season 1888/89 (the “invincible” season) they won the League championship without losing a game, and the F.A. Cup without conceding a goal (a great double, never likely to be equalled).

In all, Preston has twice won the League championship, been runners-up six times, and three times Second Division Champions. Seven F.A. Cup Final appearances, twice winners. Many still recall their last Cup Final in 1964, Preston v. West Ham — a game which neither team deserved to lose. Twice Preston were in the lead, only for West Ham to gain the vital goal two minutes from the end of the match, the only occasion West Ham were in front. Everyone in the vast Stadium that day sympathised with Preston.

Many great players have been associated with the Club: Jack Goodall (a great right-back); Joe McCall (the prince of England’s centre-halves); Andy Beattie (later a successful manager); Frank O’Farrell (manager of Leicester City); Alex James (Scotland’s most famous inside-left); Bill Shankly (manager of Liverpool) and Tommy Docherty.

The one person, more than any other, whose name seems synonymous with Preston is, of course, Tom Finney — the wizard of the wing, holder of over 70 England caps, and “Footballer of the Year” 1953/4 and 1956/7.

The last time Preston visited the County Ground was Easter Saturday, 17th April, 1965. A day many of us will never forget.

Before the Easter programme began the bottom three positions in Division 2 read:

	P	W	D	L	F	A	Pts.
Swindon Town	38	13	4	21	57	74	30
Portsmouth	38	10	9	19	49	73	29
Swansea Town	38	8	10	20	53	77	26

On the Friday we defeated Rotherham United at home and gained two valuable points. Everyone hoped for another victory on Saturday, and Swindon would probably be free of relegation worries. It looked very much as if our wishes would come true with Swindon leading 2—1, and the play being mostly in our opponent’s half of the field. Then unfortunately a sudden break out, a long kick from the half-way line, and Preston had equalised. A very valuable point lost, and one which would have probably saved us from relegation. On Easter Monday we lost at Rotherham, and the following Saturday came the all important match at Southampton, which all will remember. We lost 1—2.

The teams which played on Easter Saturday were:

Swindon: Hicks; Dawson, Trollope; Shergold, McPherson, Atherton; Summerbee, Morgan, Brown, Smart, Rogers.

Preston: Barton; Patrick, Smith; Lawton, Singleton, Kendall; Wilson, Godfrey, Dawson, Spavin, Watt.

THE GREAT WESTERN HOTEL

(OPPOSITE SWINDON RAILWAY STATION)

The business man's hotel with a top class
steak bar too!

Specialists in
LUNCHEONS and DINNERS
WEDDING PARTIES and RECEPTIONS
good food — quick service

J. ARKELL and SONS LIMITED Telephone SWINDON 22047

Mills and Merricks Limited

16-17 Bridge Street Swindon

Telephone 5365/6

"HOME OR AWAY"

**our function is to ensure that your home is
tastefully and economically furnished**

SWINDON'S COMPLETE HOUSE FURNISHERS

New City Office Supplies Limited

*Office and Stationery Suppliers
to Industry and Commerce
6 Commercial Road Swindon
Telephone Swindon (STD Code 0793) 4605*



CLARK BROS. (Swindon) LTD

Building and Civil Engineering Contractors

CONSULT US FOR
BUILDING AND CIVIL ENGINEERING
CONSTRUCTION IN ALL ITS PHASES

STRATTON ROAD

SWINDON

Telephone Swindon 27261

Supporters' Club Notes

For those supporters intending to go to the away match at Millwall, it should be noted that the kick-off is at 7 p.m. on Saturday, 4th April and not the usual afternoon match. This follows an agreed policy on Grand National Day. Supporters of the Supporters' Club Annual Outing should particularly note this, if they do not already know. It means that the usual evening visit, en masse, to a London theatre is out. Anyone not yet completely in the picture should contact Mrs. Ranger, our Social Secretary, as soon as possible.

Social Club members might like to take note of the Easter Holiday arrangements:

GOOD FRIDAY, 27th March — Bingo at 8 p.m. and dancing to The Cliff Taylor Trio.

SATURDAY, 28th March. Saturday Night Party with The Tempos.

SUNDAY, 29th March. BINGO at 8 p.m. and dancing to "THE AMALGAMATION".

EASTER MONDAY, 30th — Party night dancing, with music by "THE MARK FIVE".

A bar extension to 11.15 p.m.

On Tuesday, 31st March, after the Birmingham City match, a draw will be held in the Social Club for a rather unique prize. It is a football autographed by the players of the Football League Cup Winners and F.A. Cup Winners 1969 — **Swindon Town** and **Manchester City**. As a consolation, a portable radio will be the 2nd prize. Tickets are 6d each and available in the Social Club and from any Committee Member. **GET YOURS** as soon as possible. All profits will be placed in the Social Club Development Fund, needed for the permanent club in the new stand.

A welcome today to the Jubilee Thistle Football Club, team, officials and supporters — from New Tredegar, South Wales. The annual fixture with the Supporters' Club Sunday League Team was played this morning and the whole party are at this match today, and are spending the evening in the Social Club.

Finally, a welcome to the team and supporters of Preston North End. Our wishes don't run to two points for you, of course, but, otherwise, we trust you enjoy the game and visit to Swindon.

Face in the crowd — is it you?



In all future editions of this Season's programme we shall publish a photograph of a small section of the crowd at a previous match, one member of which will be clearly indicated by means of a circle. This person will be entitled to a free seat at the next match on producing the programme at the office.

WE AIM TO PLEASE — TRY US

Tunleys

(1)

Glass (2)

Wallpaper (3)

Paint (4)

Polishes (5)

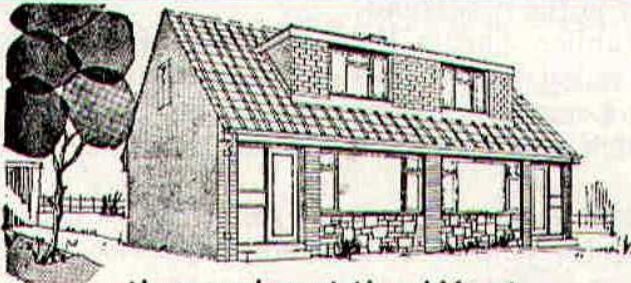
Artist Materials (6)

Prints (7) Ladders (8) Mirrors (9) Brushes (10) Aladdin Heaters (11).

MEMBERS OF THE



12/13 Gloucester Street Swindon Wiltshire



throughout the West

you will find Bradley Estates beautifully situated to meet the requirements of modern living. If you are thinking about a new home and would like to receive full details of our current and planned estates write now to 74 Victoria Road Swindon Wiltshire. Please send me details of

- Green Meadow Estate, Swindon, Wiltshire
- Nythe Estate, Swindon, Wiltshire
- Monkton Park Estate, Chippenham, Wiltshire
- Park Hill Estate, Frome, Somerset
- Damory Down Estate, Blandford Forum, Dorset
- Harkwood Farm Estate, Poole, Dorset
- Roman Way Estate, Bourton-on-the-Water, Gloucestershire

Name.....

Address.....



BRADLEYESTATES

our visitors



PRESTON NORTH END FOOTBALL CLUB

Pen pictures 1969/70

ALAN KELLY (Goalkeeper)

Born Dublin. Joined the Deepdale staff from Drumcondra in April 1958. An Eire International on many occasions. Alan's off the field interests include, golf and table tennis. A gents hairdresser with local firm. 41 appearances last term.

GERRY STEWART (Goalkeeper)

Born Dundee. Signed professional in September 1963. Made his League debut at Wolves 1967. Height 5ft 10in. Weight 11½ stone.

GEORGE ROSS (Full Back)

Born Inverness. Came to Deepdale direct from school. Made his first team debut in 1960 when only 18, has now over 400 appearances to his credit.

JOHN RITCHIE (Full Back)

Born Ashington, County Durham. Transferred from Port Vale in April 1967. Strong, forceful player with an eye for the goals.

BERT PATRICK (Full Back)

Born Kelsutt. Came to Deepdale from school and worked his way through the junior ranks. Six appearances last term. Height 5ft 8in. Weight 11 stone.

JIM SMITH (Wing Half)

Born Arbroath. Played over 400 league and cup games for the first eleven during his ten years with the Club. Represented the British Army.

BILL CRANSTON (Half Back)

Born Kilmarnock. Transferred from Blackpool in 1964. Tall powerful defender who has also appeared at centre forward. 10 appearances last term.

GRAHAM HAWKINS (Half Back)

Born Darlaston. Came to Deepdale from Wolves in January 1968. A member of the F.A. party to tour New Zealand last summer.

JIM McNAB (Half Back)

Born Denny. Signed in March 1967 from Sunderland. A versatile defender Jim has operated in most of the defensive positions.

Hatton's Newsagency

A. J. D. & N. J. Woodhouse

Newsagents :: Tobacconists
Confectioners

Agents for Wessex School of Motoring
Booking Agents for Rimes Coaches

6 REGENT CIRCUS (near G.P.O.)
Telephone Swindon 22731

BRETTS

PET and GARDEN SUPPLIES

32-33 Commercial Road
and
6 Cromwell Street Swindon

THE PORK SHOP

(Swindon Bacon Curing Co. Ltd.)

Specialists in

Bacon - Pork - Cooked Ham

50 FLEET STREET SWINDON
Telephone 22122

J. WILMER

Coal Merchants

St. Margaret's Road Swindon

Telephone 22535

SOUTHERN LAUNDRY CO. LTD.

Launderers and Dry Cleaners

HAYDON STREET SWINDON
Telephone 4161

At Your Service

A. E. LUDLOW LIMITED

Wholesale Fruit and Potato Merchant

COLBOURNE STREET
SWINDON WILTSHIRE
Telephone Swindon 3583

We deliver Fresh Fruit, Vegetables
and Potatoes daily—Wholesale Only

FOR ALL YOUR ANGLING NEEDS
CONSULT

Frank Woodward

Swindon's Fishing Tackle Specialist

25 HAVELOCK STREET SWINDON
Telephone 3879

For Paints of Good Quality

H. S. Hodges & Sons

(SWINDON) LTD.

Cricklade Road Swindon
Telephone 22422

Dulux, Brolac, Valspar, Wallcharm, etc.

24 hour Delivery
Service

YOUR COMPLETE JANITORIAL SERVICE

Wilts Cleaning Supply Service

Kembrey Warehouse Rear 255 Cricklade Road
SWINDON

Telephone 21012

Represented by G. ALEXANDER
Telephone Swindon 27833

OUR VISITORS (continued)

FRANK LEE (Forward)

Born Chorley. Frank signed full time April 1965, prior to that he was a part-timer. 28 appearances last season. Hobbies include local musical comedy.

GEORGE LYALL (Forward)

Born Wick. Came to Deepdale from Raith Rovers in April 1966. Operates in mid-field. Golf takes up most of George's leisure time.

ARCHIE GEMMILL (Forward)

Born Paisley. Came to Deepdale in May 1967 from St. Mirren. Mobile midfield operator Archie made seventeen appearances last term, and scored three goals.

WILLIE IRVINE (Forward)

Born Antrim. Signed from Burnley March 1968. An Irish International on numerous occasions. Leading goalscorer last season with 20 goals. Hobbies include golf and gardening.

DEREK TEMPLE (Forward)

Born Ormskirk, transferred from Everton September 1967. Capped for England against West Germany in 1965. Has played in every forward position for North End.

DAVID WILSON

Born Burnley, returned to Deepdale from Liverpool close season 1968 after a short stay on Merseyside. Seventeen appearances last season. Another player who enjoys a game of golf.

DICK HEPPOLETTE

Born India. Came through the junior ranks to make his first team debut December 1968 at the age of 19, regular choice thereafter. Mobile midfield player, exceptionally effective in the air. A qualified ladies hairdresser with a local firm.

ALEX SPARK

Born Stenhousemuir. First team debut December 1968 when only 19, fourteen league and cup appearances last season. A cool, composed defender. Alex's biggest soccer thrill to date was playing for Scotland in last season's International Youth Tournament in France.

GERRY INGRAM

Born Hull. Signed from Blackpool September 1968. Tall, powerful striker. Six goals from 37 league appearances last term. Signed for Blackpool from local Hull football as recently as April 1967. 18 goals for the Seasiders in his first year.

Division I I

Fixture List

August

9 Blackburn Rovers	(A) 0—2
13 Cardiff City	(A) 2—2
16 Carlisle United	(H) 2—2
19 Cardiff City	(H) 2—1
23 Aston Villa	(A) 2—0
30 Charlton Athletic	(H) 5—0

September

2 League Cup (2) Swansea	(A) 3—1
6 Blackpool	(A) 2—3
13 Oxford United	(H) 0—0
16 Middlesbrough	(A) 0—0
20 Queen's Park Rangers	(A) 0—2
24 League Cup (3) Oxford	(A) 0—1
27 Leicester City	(H) 1—1
30 Millwall	(H) 2—1

October

4 Bolton Wanderers	(A) 1—0
7 Carlisle United	(A) 2—2
11 Sheffield United	(H) 2—1
18 Hull City	(H) 1—0
25 Portsmouth	(A) 1—3

November

1 Norwich City	(H) 2—0
8 Birmingham City	(A) 0—2
15 Watford	(A) 0—0
22 Huddersfield Town	(H) 2—1
29 Preston North End	(A) 1—3

December

6 Bristol City	(H) 1—1
13 Oxford United	(A) 0—0
20 Blackpool	(H) P
26 Aston Villa	(H) 1—1
27 Charlton Athletic	(A) 1—1

1970

January

3 F.A. Cup Blackburn	4—0
10 Queen's Park Rangers	(H) 0—0
17 Leicester City	(A) 2—0
24 F.A. Cup (4) Chester	(H) 4—2
31 Bolton Wanderers	(H) 3—2

February

7 F.A. Cup (5) Scunthorpe	(H) 3—1
9 Sheffield United	(A) 2—1
14 Blackburn Rovers	(H) P
21 F.A. Cup (6) Leeds	(H) 0—2
28 Hull City	(A) 1—1

March

3 Portsmouth	(H) 3—1
7 Huddersfield Town	(A) P
10 Blackburn Rovers	(H) P
14 Preston North End	(H)
21 Bristol City	(A)
28 Watford	(H)
30 Norwich City	(A)
31 Birmingham City	(H)

April

4 Millwall	(A)
14 Middlesbrough	(H)

Appearances

Name	Div. II	League Cup	F.A. Cup	Cup Winners Cup
Downsborough	31	2	4	2
Thomas	31	2	4	2
Trollope	31	2	4	2
Butler	31	2	4	2
Burrows	30	2	4	1
Harland	31	2	4	2
Smith	17 (1)	2	4	2
Horsfield	30	2	4	2
Smart	31	2	4	2
Noble	28	2	3	2
Rogers	25	2	4	2
Jones	8 (6)		1 (1)	(1)
Blick	1 (4)			1
Heath	15 (1)			
Down	(1)			
Penman	1	(1)		

(Playing as substitute in brackets)

Goalscorers

Name	Div. II	League Cup	F.A. Cup	Cup Winners Cup
Horsfield	13		4	3
Noble	11	3	1	1
Jones	5		1	1
Rogers	6		1	
Smith	2		1	
Burrows	1			
Trollope	2			
Thomas	1			
Smart	2		1	
Butler			1	
Opponents	1			

League Table – Division I I

(up to and including Wednesday, 11th March, 1970)

	P	W	D	L	F	A	P
Huddersfield	34	19	9	6	53	31	47
Sheffield United	33	18	5	10	62	30	41
Cardiff City	33	15	10	8	53	34	40
Queens Park Rangers	34	17	6	11	59	44	40
Blackpool	32	15	10	7	45	38	40
Swindon Town	32	13	13	6	44	34	39
Middlesbrough	33	16	7	10	43	36	39
Blackburn Rovers	33	16	6	11	43	41	38
Leicester City	33	13	11	9	47	41	37
Bristol City	34	13	10	11	45	35	36
Carlisle United	35	13	10	12	53	49	36
Millwall	34	10	13	11	44	46	33
Oxford United	33	10	11	12	29	33	31
Hull City	34	11	8	15	53	57	30
Portsmouth	35	11	8	16	56	65	30
Birmingham City	35	10	10	15	47	60	30
Norwich City	33	12	6	15	33	41	30
Watford	34	8	10	16	36	44	26
Bolton W.	34	9	8	17	45	57	26
Preston North End	33	7	10	16	35	50	24
Charlton Athletic	34	5	14	15	28	60	24
Aston Villa	33	5	11	17	29	55	21

Key of the Board

First Section

- A—Arsenal v. Liverpool
- B—Crystal Palace v. Southampton
- C—Everton v. Tottenham Hotspur
- D—Leeds United v. Manchester City
- E—Manchester United v. Burnley
- F—Nottingham Forest v. Derby County
- G—Sunderland v. Wolverhampton W.
- H—W.B.A. v. Newcastle United
- I—West Ham Utd. v. Ipswich Town
- J—Birmingham City v. Middlesbrough
- K—Blackburn Rovers v. Oxford United
- L—Blackpool v. Bristol City
- M—Cardiff City v. Huddersfield Town
- N—Charlton Athletic v. Aston Villa
- O—Hull City v. Leicester City
- P—Norwich City v. Watford
- Q—Portsmouth v. Millwall
- R—Q.P.R. v. Bolton W.
- S—Sheffield United v. Carlisle United
- T—Bournemouth & B.A. v. Plymouth A.

Second Section

- A—Bristol Rovers v. Barrow
- B—Doncaster Rovers v. Gillingham
- C—Fulham v. Rochdale
- D—Halifax Town v. Reading
- E—Luton Town v. Mansfield Town
- F—Southport v. Tranmere Rovers
- G—Stockport County v. Bradford City
- H—Torquay United v. Brighton
- I—Aldershot v. Southend United
- J—Colchester United v. Brentford
- K—Hartlepool v. Lincoln City
- L—Northampton v. Grimsby Town
- M—Peterborough Utd. v. Exeter City
- N—Workington v. Port Vale

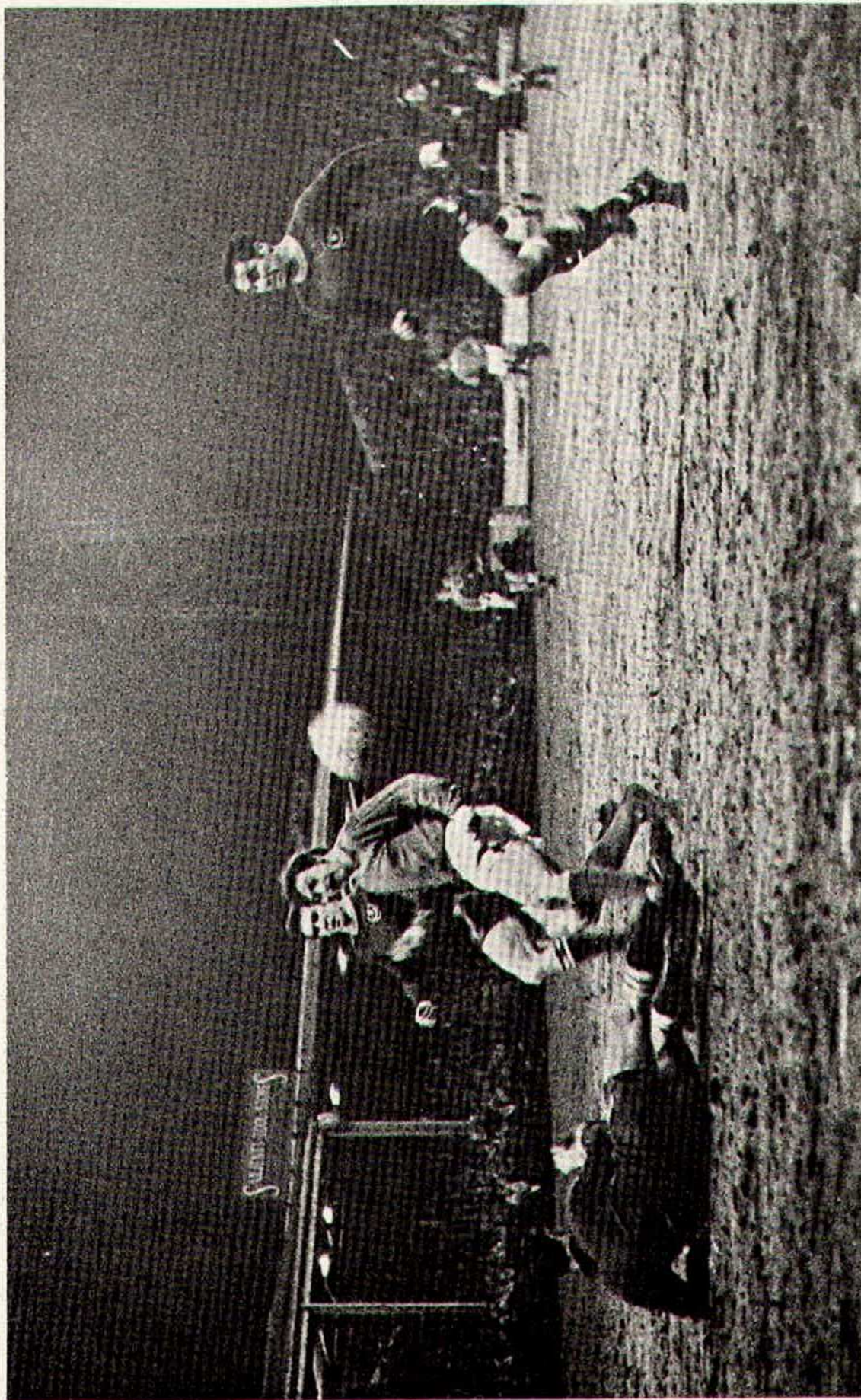


Photo by R. Marsh

Rogers foiled by the Portsmouth goalkeeper.

The man in the middle



DENNIS PUGH

Began refereeing in 1955 in Chester and District League, graduated through West Cheshire League and Cheshire County League to the Football League Linesmen's List six years ago. Has been on Referees List for the past three seasons.

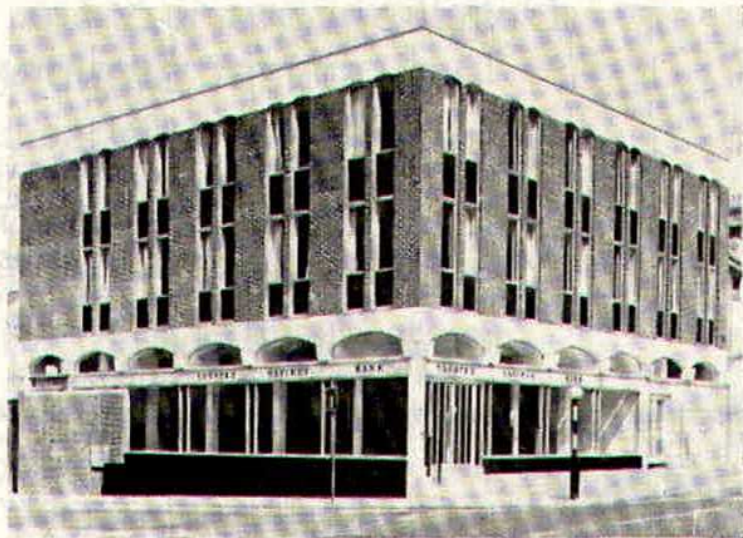
Married with three children.

Primary School Head Teacher at Kelsall, eight miles from Chester.

Hobbies: Golf, reading, music and badminton.

T RUSTEE
S AVINGS
B ANK

93 Commercial Road
Swindon



Facilities include

- CURRENT ACCOUNT SERVICE
- 24 HOUR CASH DISPENSER
- T.S.B. UNIT TRUST
- CONTRACTUAL SAVINGS SCHEME
(giving substantial Tax benefits)

**INTEREST 7% IN THE
SPECIAL INVESTMENT DEPT.**

DON ROGERS SPORTS
29 FARINGDON ROAD SWINDON

Telephone 27378

Main suppliers to Swindon Town Football Club
Stockists of
All leading makes of Football Boots and Clothing
Table Tennis, Badminton, Rugby and Hockey equipment
IN FACT THE COMPLETE SPORTS OUTFITTER

RIMES of SWINDON

POPULAR EXCURSION TO

			Fare	
			adult	child
Sat., March 21st	BRISTOL CITY	Dept. 12.30 hrs.	9/-	6/-

SERVICE DIRECT TO THE GROUND
ALL SEATS NUMBERED AND RESERVED

Book now at

102 Commercial Rd., Swindon
Telephone 27113

46 Cricklade St., Cirencester
Telephone 3479

or with any of Rimes Booking Agents

Dobell Shearman & Co. Ltd.

HIGH STREET SWINDON

Telephone 4961

FANCY and COMMERCIAL STATIONERS
TYPEWRITERS and OFFICE EQUIPMENT

Greetings Cards for all Occasions
from Leading Art Publishers



W. J. CASTLE

Office and Bakery

4 and 5 MARKET STREET
SWINDON

Telephone 22017

Specialists—

BIRTHDAY CAKES - WEDDING CAKES
DAIRY CREAM - PASTRIES
BUNS - ROLLS - SPONGES



Commencing Today our new . . .

GOLDEN GOAL COMPETITION

Tickets bearing the time in minutes and seconds will be on sale before the game – price **one shilling**

The ticket with the exact time when the **FIRST GOAL** is scored will win

£60

The ticket bearing the time when the **LAST GOAL** is scored will win

£10

The official announcer will be the timekeeper and he will announce the official time of both goals.

Should only one goal be scored the winning ticket holder will receive £70. In the event of no goals tickets bearing no score will win £10

A further prize of £10 will also be given for the ticket bearing the number corresponding to the official attendance at the match

Be sure to get your ticket – Watch for the
GOLDEN GOAL GIRLS!

HARRY LUNN

(Ex NOTTS COUNTY, PORTSMOUTH and SWINDON TOWN F.C.)

Fish Bar and Restaurant
27-28 COMMERCIAL ROAD SWINDON

RESTAURANT open 9 a.m. to 10 p.m. for

Snacks - Lunches - High Teas - Evening Meal

FISH BAR open Mid-day and Evenings until 11 p.m.

HULFORD MOTORS LIMITED

SELF DRIVE HIRE

Fleet of 1969/8 Fords Escorts De-Luxe
Cortinas De-Luxe Cortinas 1600 Estate
(Bench Seat Column Change) — Zephyr V4s

SHRIVENHAM ROAD

(200 yards from Football Ground)

Telephone 4934

Large Car Park Available

COWLEY BROS. (Wroughton) LTD.

BUILDERS OF MODERN ATTRACTIVE
HOUSES and BUNGALOWS

Developments at

SWINDON

WROUGHTON

BADBURY

Office

28 NEWPORT STREET
SWINDON

Telephone Swindon 6870

Reserved for British Rail



Inter-City

Previous Matches

DIVISION II

SATURDAY, 28th FEBRUARY, 1970

Drew with Hull City (Away) 1—1.

Team: Downsborough; Thomas, Trollope; Butler, Burrows, Harland; Smith, Smart, Horsfield, Noble, Rogers.

Scorer: Rogers.

Attendance:

Referee: Mr. K. Howley (Billingham)

TUESDAY, 3rd MARCH, 1970

Beat Portsmouth (Home) 3—1.

Team: Downsborough; Thomas, Trollope; Butler, Burrows, Harland; Smith, Smart, Horsfield, Noble, Rogers. Sub. Jones.

Scorers: Noble (2), Jones.

Attendance: 19,497.

Referee: Mr. C. I. Robinson (Manchester)

HELLENIC LEAGUE

SATURDAY, 28th FEBRUARY, 1970

Beat Hazells (Away) 2—0.

Team: Grzadkowski; Allen, Fry; Desmeules, Grubb, Dakin; Moffitt, Ackling, Bailey, Dangerfield, Porter. Sub. Moss.

Scorers: Bailey, Dangerfield.

Forthcoming Matches on This Ground

MONDAY, 16th MARCH, 1970

Football Combination

SWINDON TOWN v. BIRMINGHAM CITY

Kick-off 7.30 p.m.

TUESDAY, 24th MARCH, 1970

Football Combination

SWINDON TOWN v. CHELSEA

Kick-off 7.30 p.m.

SATURDAY, 28th MARCH, 1970

Division II

SWINDON TOWN v. WATFORD

Kick-off 3 p.m.

DEVELOPMENT FUND COMPETITION

Our main problem, like so many clubs, is to find new agents for our Competition. In the belief that many of you would be prepared to help if not 'saddled' with too big a weekly commitment, we are making a special appeal today to supporters willing to take just **ten** tickets per week.

Tickets are sent through the post together with a stamped addressed envelope for return of proceeds (and unsold tickets) so that agents are put to the minimum inconvenience, and with a weekly issue of only ten tickets a new agent would quickly find that 'selling' is hardly necessary.

Within one's own family circle and neighbours a demand for ten tickets can quickly be established.

As in life, help is of the greatest value when needed most, so today we appeal to everyone – it's 'your Club, your Town, your Team' – and a little help from a lot of people could work miracles.

Give us a hand by filling in the coupon below for just ten tickets a week, and send to: The Secretary, Swindon Town F.C., County Ground, Swindon, or hand it into the office after today's game.

Name _____

Address _____

} Block
} Capitals
} please

I am not under 18 years of age. Please send me ten Development Fund Competition tickets per week.

Suppliers to the Swindon Team
MAY WE SUPPLY YOU?



EARLE

of Chippenham Limited

MAIN

FORD

DEALERS

COCKLEBURY ROAD CHIPPENHAM

Telephone 3255

H. HIBBERD LIMITED

FOR YOUR EARTH-MOVING EQUIPMENT

Plant Hire Contractors



40 NEWPORT STREET SWINDON

Telephone Swindon 6125

Football Combination

Fixture List

1969

August

9	Southampton	(H)	2—2
16	Swansea Town	(A)	0—1
23	Queen's Park Rangers	(H)	1—4

September

4	Oxford United	(A)	2—0
6	Bristol City	(H)	1—2
17	Cardiff City	(A)	3—2
20	Arsenal	(H)	1—2
27	Luton Town	(A)	0—2

October

4	Reading	(H)	1—2
7	Bristol Rovers	(A)	P
11	Ipswich Town	(A)	1—0
21	Bristol City	(A)	2—7
25	Crystal Palace	(H)	1—0

November

8	Plymouth Argyle	(H)	3—1
15	Crystal Palace	(H)	1—2
22	Swansea Town	(A)	1—1
29	Tottenham Hotspur	(H)	1—4

December

8	Peterborough United	(A)	0—2
13	Leicester City	(H)	0—2
17	Plymouth Argyle	(A)	1—1
20	West Ham United	(A)	3—1
27	Swansea Town	(H)	0—2

1970

January

27	Arsenal	(A)	0—5
----	---------	-----	-----

February

3	Arsenal	(H)	0—4
10	Bristol Rovers	(H)	P
17	Walsall	(A)	P
24	Northampton	(A)	4—1

March

11	Crystal Palace	(A)
16	Birmingham City	(H)
18	Norwich City	(A)
21	Bristol Rovers	(A)
24	Chelsea	(H)

April

4	Bournemouth & B.A.	(H)
---	--------------------	-----	-------

Appearances

Name	Appearances		Goalscorers	
	Foot. Comb.	Foot. Cup	Foot. Comb.	Foot. Cup

Price	1			
Dawson	8	5		
Fry	14	5		
Desmeules	10	4		
Blick	17	6		
Handrick	16 (1)	7	2	
Heath	5	2		
Penman	12	3	1	
Down	14	5	6	
Dangerfield	15 (1)	6	12	1
Moss	4	1		1
Bailey	12 (2)	6	1	
Grzadowski	2			
Hubbard	15	5		
Jones (R)	12	5		
Allen (K)	8	3		
Jones (C)	4	2		
Wetson	1	1		1
Claypole	11	3		
Porter	3	4	2	1
Allen K. R.	2	2		
Smith		1		1
Boyd		1		

(Playing as substitute in brackets)

AKERS GARAGE LIMITED

THE STREET MOREDON SWINDON WILTSHIRE

Telephone Swindon 3457/8

main dealer for
VAUXHALL/BEDFORD
and
Parts and Accessories
Sales and Service

Showrooms open
MONDAY to FRIDAY — 8 a.m. to 8 p.m.

SATURDAY — Closed 7 p.m.

SUNDAYS — 10 a.m. to 2 p.m. for Petrol and Viewing



MODERN LIVING IN EXPERIENCED HANDS

Wilson homes are the result of over 60 years experience in house building. The Company Architect and his design team are always researching into the ever changing requirements of home buyers, to give them better designed homes, which are easy to run, easy to maintain and comfortable to live in.



All our houses and bungalows are built to the stringent specification of the National House Builders Registration Council who will guarantee your home for 10 years.

Visit a Wilson Show Home and you will see for yourself why Wilson's have such a reputation in giving value for money.

WILSON

(Swindon) LTD., 90-92 Commercial Road, Swindon Telephone 6361 (3 lines)

seating manufacturers for Stadium Seats Ltd

- * Heavy, medium and light steel fabrication
- * Custom made production line equipment
- * Ancillary work for industry and the building trade

FAST EFFICIENT SERVICE BY



MARTYYN LYNSHAW LTD

BOUNDARY WORKS - STRATTON ROAD - SWINDON - WILTS

Telephone 21844

spectator seating in high density polyethylene

- * Supplied to over 36 Football League clubs
- * Any colour. No maintenance
- * Industrial seats for the food, electronics and pharmaceutical industries
- * Largest supplier of spectator and industrial seating in Europe

STADIUM SEATS LTD

STRATTON ROAD - SWINDON - WILTS Telephone 21844